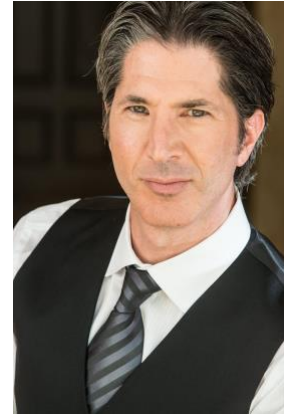


BRIAN DOUGLAS LAWENDA, M.D.

Northwest Cancer Clinic/GenesisCare
Medical Director and Radiation and Integrative Oncologist

7379 West Deschutes Avenue
Suite 100
Kennewick, Washington 99336

1050 West Elm Avenue
Suite 150
Hermiston, Oregon 97838



TEL: (509) 987-1800
WEBSITE: <https://www.genescare.com/us/>
EMAIL: blawenda@nwcancerclinic.com

Expertise:

Radiation Oncology (Brain, Breast, Gastrointestinal, Gynecological, Head and Neck, Lung, Prostate/Genitourinary, Skin Cancers, Brachytherapy, Stereotactic Radiosurgery/SRS, Stereotactic Body Radiation Therapy/SBRT, IMRT/MAT)

Functional Medicine
Integrative Oncology
Medical Acupuncture
Medical Expert Witness

Postgraduate Education:

Functional Medicine: (2013-2014) Functional Medicine Mentorship Program, Kalish Institute of Functional Medicine

Medical Acupuncture: (2006) UCLA/Stanford Universities Schools of Medicine/Helms Medical Institute, Berkeley, CA

Residency: (2000-2004) Radiation Oncology, Harvard Medical School, Massachusetts General Hospital, Boston, MA (Chief Resident: 2003-2004)

Internship: (1997-1998) General Surgery, Naval Medical Center San Diego, San Diego, CA

Education:

Medical School: (1993-1997) Temple University School of Medicine, Philadelphia, PA
(*Doctor of Medicine*)

Undergraduate: (1988-1993) University of California at San Diego, La Jolla, CA
(*Bachelor of Science in Biochemistry and Cellular Biology*)

(1990-1991) University of Kent, Canterbury, United Kingdom (*Minors:
British History and Art History*)

Board Certification:

(JUN 2005) American Board of Radiology, Certificate in Radiation
Oncology

Staff Appointments:

(AUG 2017—PRESENT) Clinical Associate Professor, Medical
Education and Clinical Sciences, Elson S. Floyd College of Medicine,
Washington State University, Tri-Cities Campus

(MAY 2016 – PRESENT) Medical Director and Radiation Oncologist,
Northwest Cancer Clinic/21st Century Oncology, Kennewick, WA

(NOV 2013 – PRESENT) National Director of Integrative Oncology and
Cancer Survivorship, 21st Century Oncology

(NOV 2013—PRESENT) Clinical Professor, Department of Internal
Medicine, University of Nevada School of Medicine, Las Vegas, NV

(JUN 2015 – MAY 2016) Advisory Board Member, Nevada Palliative
Care Association

(JUL 2010 – MAY 2016) Clinical Director, 21st Century Oncology, Las
Vegas, NV

(2010 – MAY 2016) Member, Cancer Committee, Sunrise Hospital and
Medical Center, Las Vegas, NV

(2010 – MAY 2016) Member, Cancer Committee, University Medical
Center, Las Vegas, NV

(JUN 2008 – 2014) Adjunct Assistant Professor, Department of Radiation
Oncology, Indiana University School of Medicine, Indianapolis, IN

(JAN 2006 – JUL 2010) Staff, Radiation Oncology, VA San Diego Healthcare System, San Diego, CA

(MAY 2006 - JUN 2008) Department Head, Breast Health Center and Mammography, Naval Medical Center San Diego, San Diego, CA

(SEP 2005 – JUL 2010) Assistant Professor, Department of Radiology and Radiological Sciences, Uniformed Services University of the Health Sciences, Bethesda, MD

(JUL 2004 – JUL 2010) Clinical Director, Radiation Oncology Division, Naval Medical Center San Diego, San Diego, CA

Hospital Staff Privileges: (present)

- Kadlec/Providence Regional Medical Center, Richland, WA
- Lourdes Hospital, Pasco, WA
- Trios Hospital, Kennewick, WA

Honors and Recognition:

Staff:

(2014 – 2021) “America’s Top Doctors” *Castle & Connolly*

(2012-2021) “Top Doctor” *US News & World Reports*

(2014 – 2016) “Top Doctor” *Vegas Seven* magazine

(2013 & 2015) “Top Radiation Oncologist in The Nation”, Top Doctor Competition, HealthTap

(2014 & 2015) “Top Doctor” *VEGAS INC HealthCare Quarterly* magazine

(2013 & 2014) “Medical Marvel” *Nevada Business Magazine*

(2013) “Excellence in Physician Care” Healthcare Headliner award, *VEGAS INC* magazine

(2012 & 2013) “Top Doctor” *Las Vegas Life* magazine

(2013) “Man of The Year” nominee, The Leukemia & Lymphoma Society

(2012) “Superb” rating, 10 out of 10, Avvo Ratings

- (2005) First place award, 2005 Academic Research Competition, Naval Medical Center San Diego, San Diego, CA
- Residency:** (2003-2004) Chief Resident, Radiation Oncology, Massachusetts General Hospital, Harvard Medical School, Boston, MA
- (2004) Recipient, ASCO Foundation Merit Award
- (2003) Radiological Society of North America, Roentgen Resident Research Award, Massachusetts General Hospital, Harvard Medical School, Boston, MA
- (2003-2004) Recipient, Harvard Medical School, Osher Institute of Complementary and Alternative Medicine, Pilot Study Grant, (\$45,000)
- Medical School:** (1997) Alpha Omega Alpha Honors Medical Society, Temple University School of Medicine
- Undergraduate:** (1990-1991) University of California Education Abroad Program Scholarship, University of Kent, Canterbury, United Kingdom
- (1989) Provost's Honors List, University of California San Diego

Publications/Research:

- **Integrative Therapies to Mitigate the Toxicities of Cancer Treatment.** Lawenda BD, Integrative Oncology. Chapter 25, Editors: Donald Abrams and Andrew Weil, Oxford University Press, New York, second edition, 2014.
- **Adrenal and Retroperitoneal Tumors.** Buchsbaum JC, Douglas JG, Dasgupta B, Lawenda BD. Principles and Practice of Radiation Oncology. Chapter 75: Lippincott William & Wilkins, Philadelphia, sixth edition, 1517-1526, 2013.
- **Acupuncture: Could an ancient therapy be the latest advance in the treatment of lymphedema?** Lawenda BD, Vicini FA. *Cancer*, (epub ahead of print, April 10, 2013.)
- **Breast Cancer Related Lymphedema: A Review of Recent Developments.** Shah C, Badiyan S, Khwaja S, Dyk P, Arthur D, Lawenda BD, Finkelstein SE, Vicini FA. *Androl Gynecol: Curr Res*, 1(2), March 25, 2013.
- **Quackery, Placebos, and Other Thoughts: An Integrative Oncologist's Perspective.** Lawenda BD. *Oncology*, 26(8):762, 2012 Aug.
- **Accelerated Partial Breast Irradiation with Low-Dose-Rate Interstitial Implant Brachytherapy After Wide Local Excision: 12-Year Outcomes from a Prospective Trial.** Hattangadi JA, Powell SN, MacDonald SM, Mauceri T, Ancukiewicz M, Freer P, Lawenda BD, Alm El-Din MA, Gadd MA, Smith BL, Taghian AG., *International Journal of Radiation Oncology, Biology, Physics*, 83(3):791-800, 2012 Jul 1.
- **Systems Modeling in Integrative Oncology.** Lawenda BD, Friedenthal SA, Sagar SM, Bardwell W, Block KI, Mills PJ. *Integrative Cancer Therapies*, June 2011.
- **Prolonged survival after episiotomy recurrence of cervical cancer complicating pregnancy.** Hafeez I, Lawenda BD, Schilder JM, Johnstone, PA. *Eur J Gynaecol Oncol*, 32(2):211-3, 2011.
- **Acupuncture's Effects on Relieving Symptoms for Post-radiation Cystitis and Prostatitis.** De Souza EA, Lawenda BD. *The American Acupuncturist*, 57:19-25, Fall

2011.

- **Skin, Hair, Pigmentation and Wound Healing.** Lawenda BD and Withers HR. Human Radiation Injury, Chapter 44: Editors: Shrieve DC and Loeffler JS. Lippincott William & Wilkins, Philadelphia, 2010.
- **Laser Acupuncture for the Treatment of Psychoemotional and Physical Symptoms in Oncology Patients: Retrospective Analysis.** Lawenda BD. *Journal of the Society for Integrative Oncology*, 8(4): 131-139, Fall 2010.
- **Roundtable Discussion: Integrative Therapies During Cancer and Chemotherapy.** Ulbricht C, Block KI, Cohen L, Garcia K, Lawenda BD, Lee R, Markman M, Sollars D. *Alternative and Complementary Therapies*, 16(3):132-139, June 2010.
- **Patients Increasing Want an Integrative Approach to Their Cancer Care: A Radiation Oncologist's Perspective.** Lawenda BD. *Journal of the Society for Integrative Oncology*, 8(2):33-34, Spring 2010.
- **Roundtable Discussion: Acupuncture and Cancer Care.** Hart J, Johnstone PA, Lawenda BD, Meador-Stone JA. *Alternative and Complementary Therapies*, 16(1):11, February 2010.
- **Response to "Radiation Therapeutic Gain and Asian Botanicals."** Lawenda BD. *Integrative Cancer Therapies*, 9(1):14-15, 2010.
- **The Role of Integrative Oncology in a Tertiary Prevention Survivorship Program.** Sagar SM, Lawenda BD, *Preventive Medicine*, 49(2-3):93-98, Aug-Sep 2009.
- **Lymphedema: A primer on the identification and management of a chronic condition in oncologic treatment.** Lawenda BD, Mondry TE, Johnstone PA. *CA Cancer J Clin*, 59(1):8-24, 2009.
- **Analysis of radiation therapy for the control of Merkel cell carcinoma of the head and neck based on 36 cases and a literature review.** Lawenda BD, et al. *Ear Nose Throat J*. 87(11):634-43, Nov 2008.
- **Complementary and Alternative Medicine Therapies to Mitigate the Toxicities of Cancer Therapy.** Lawenda BD and Johnstone PA., Integrative Oncology, Chapter 25, Editors: Donald Abrams and Andrew Weil, Oxford University Press, New York, 492-501, 2009.
- **The Effects of Radiation Therapy on the Lymphatic System: Acute and Latent Effects.** Lawenda BD and Mondry TE, *LymphLink*, 20(3):1-31, 2008
- **Should Supplemental Antioxidant Administration Be Avoided During Chemotherapy and Radiation Therapy?** Lawenda BD, et al., *Journal of the National Cancer Institute*, 100(11):773-783, 2008.
- **Retroperitoneal Tumors.** Lawenda BD and Johnstone PA. Principles and Practice of Radiation Oncology, Chapter 73: Lippincott William & Wilkins, Philadelphia, fifth edition, 1708-1716, 2008
- **Power Play: Low-level Laser Therapy Asserts a Role in Musculoskeletal Pain Management,** Lawenda BD. *Advance for Directors in Rehabilitation*, 17(5):23, 2008
- **Integrative Oncology: Tapping into a Research Goldmine,** Lawenda BD. *The Cancer Journal*, 12(6):455-458, 2006 Nov/Dec.
- **Radiomodifying Responses of Vitamin E and Epigallocatechin Gallate Supplementation During Irradiation of Implanted Tumors,** Lawenda BD, et al. *J Soc Integr Oncol*. 2007 ;5 (1):11-7; presented at the 2004 Osher Institute Science Day/Harvard Medical School, 2003 MGH Science Day/Harvard Medical School, 2004 American Society for Clinical Oncology conference/ASCO, 2004 Annual Society for Integrative Oncology meeting. (grant support by Osher Institute and Goldman Philanthropic Partnership and the USDA Antioxidant Research Laboratory.)
- **Permanent alopecia after cranial irradiation: Dose-Response Relationship,** Lawenda BD, Loeffler JS *International Journal of Radiation Oncology, Biology, Physics*. 60(3):879-87, 2004 Nov 1.

- **A Dose-Volume Analysis of Radiation Therapy for T1N0 Invasive Breast Cancer treated by Local Excision and Low-dose Rate Interstitial Implant to the Affected Quadrant**, Lawenda BD, Taghian AG, Kachnic LA, Powell SN, Massachusetts General Hospital, Department of Radiation Oncology, *International Journal of Radiation Oncology, Biology, Physics*. 56(3):671-80, 2003 Jul 1. (presented at the 44th Annual American Society of Therapeutic Radiation Oncology Conference)
- **A Study of Breathing-Induced Uncertainties in Three-Dimensional Conformal Radiation Therapy Treatment Planning for Lung Cancers**, Jiang SB, Doppke KP, Law CC, Brown AL, Lawenda BD, et. al., (abstract presented at the 87th Scientific Assembly and Annual Meeting of the Radiological Society of North America, November 2001) Shih, H, Jiang, S, Doppke, K, Brown, A, Lawenda, B, Willers, H, Kirsch, D, Chen, GT, Choi, NC *International Journal of Radiation Oncology, Biology, Physics*, 54(2), Suppl 1: 200-201, 2002 Oct 1
- **Merkel Cell Carcinoma Arising in the Head and Neck: Optimizing Therapy**, Lawenda BD, Thiringer JK, Foss RD, Johnstone PA, *Amer J Clin Oncol*, 2001 Feb;24(1):35-42; (presented at the 82nd Annual Meeting of the American Radium Society, 2000.)
- **Invasive Breast Cancer in Women Age 75 and Older**, Lawenda BD, Riffenburgh RH, Johnstone PA, Abstract #448 (85th Scientific Assembly and Annual Meeting of the Radiological Society of North America, November 1999)
- **Sensorineural Hearing Loss in Pediatric Liver Transplant Patients**, Deutsch ES, Bartling V, Lawenda BD, et. al., *Archives of Otolaryngology and Head and Surgery*, 1998;124:529-533; (presented at the 1997 annual conference of the American Society of Pediatric Otolaryngology/ASPO.)

Editorial Responsibilities:

Editorial Board

- Health Psychology
- Integrative Cancer Therapies
- Natural Standard
- Journal of Dietary Supplements

Peer Reviewer

- Radiation Research
- The Journal of the National Cancer Institute
- The British Journal of Radiology
- Journal of Clinical Oncology
- The Cancer Journal
- Journal of Surgical Oncology
- Journal of the Society for Integrative Oncology
- Journal of Environmental Pathology, Toxicology, and Oncology
- Mutation Research
- Evidence Based Complementary and Alternative Medicine
- Supportive Care in Cancer

Medical Monitoring:

- (2005-JUL 2010) Medical monitor for 56 multi-institutional and cooperative group oncology studies open at Naval Medical Center San Diego. (references available on request)

Medical Expert Witness:

- (2013-2014) Oncology expert witness for: Arthur Chapman Kettering Smetak & Pikala, P.A., 500 Young Quinlan Building, 81 South Ninth Street, Minneapolis, MN 55402
- (2016) Oncology expert witness for: Clear Counsel Law Group, 50 S. Stephanie Street Suite 101, Henderson, NV 89012

Previous Employment Experience:

- (1997-2010) *Active Duty Physician*, United States Navy, Medical Corps (Honorable discharge, Commander)
- (2004-2010) *Clinical Director*, Radiation Oncology Division, Naval Medical Center San Diego, San Diego, CA
- (2003-2004) *Chief Resident*, Department of Radiation Oncology, Massachusetts General Hospital, Harvard Medical School, Boston, MA
- (2000-2004) *Resident*, Department of Radiation Oncology, Massachusetts General Hospital, Harvard Medical School, Boston, MA
- (1998-2000) *Group Surgeon*, US Navy, Commander Naval Surface Group Middle Pacific, Pearl Harbor, Hawaii, (managed the healthcare for over 5,000 sailors: general medical care, medical evacuations, implementing and coordinating health promotion and disease prevention programs and policies, physical fitness coordinator, quality assurance and continuing education coordinator for over 30 waterfront medical providers, medical coordinator for two multi-national humanitarian disaster relief exercises involving over 50,000 military and civilian personnel)
- (1998-2000) *Head physician for cast and crew* of "Baywatch Hawaii", Honolulu, Hawaii
- (1998-2000) *General Practitioner/Urgent Care*, Straub Hospital, Honolulu, Hawaii
- (1991-1993) *Engineering Technician*, Scripps Institute of Oceanography, La Jolla, CA (built/deployed ocean-bottom seismic, electric field and magnetic field measuring instruments)
- (1991-1992) *Resident Advisor*, University of California at San Diego, Revelle College, La Jolla, CA

Committees and Volunteer Activities:

- (2020-2021) Cancer Liaison Physician, Cancer Committee, Kadlec Regional Medical Center, Richland, WA
- (2019-2021) Board Member, Benton County Medical Society
- (2015-2016) Board Member, Membership Committee, Clark County Medical Society
- (2010-2016) Member, Cancer Committee, Sunrise Hospital Medical Center, Las Vegas, NV
- (2012-2016) Member, Cancer Committee, University Medical Center, Las Vegas, NV
- (2009-2010) Member, American Cancer Society, San Diego Leadership Council, San Diego, CA
- (2009-2019) Board Member, Board of Directors, Pacific College of Oriental Medicine
- (2008-2011) Board Member (Treasurer), Society for Integrative Oncology
- (2007-2008) Member, Conference Arrangements Committee, American Radium Society
- (2006-2010) Head, NMCSO Cancer Genetics Screening Program
- (2005-2010) Member, NMCSO Morbidity and Mortality Quality Assurance Committee
- (2005) Member, Program Committee for the 2nd International Conference of the Society for Integrative Oncology

- (2004-2009) *Member*, Oncology Advisory Group, Naval Medical Center San Diego, San Diego, CA
- (2002) *Member*, Internal Legal Action Review Committee, Massachusetts General Hospital, Harvard Medical School, Boston, MA
- (2002-2003) *Steering Committee Member*, Development Subcommittee, Museum of Fine Arts Council, Boston, MA
- (2002) *Lecturer*, Housestaff Core Curriculum Retreat, "Giving Patients Bad news," Massachusetts General Hospital, Harvard Medical School, Boston, MA
- (2001-2004) *House doctor*, Boston Symphony Orchestra, Boston, MA
- (2001-2004) *Consultant/member*, Optimum Care Committee (inpatient ethics committee, end-of-life issues), Massachusetts General Hospital, Harvard Medical School, Boston, MA
- (2001-2004) *Consultant/member*, Graduate Medical Education Residency Review Committee (internal hospital residency review committee), Massachusetts General Hospital, Harvard Medical School, Boston, MA
- (2001-2004) *Member*, Biological warfare committee, Massachusetts General Hospital, Harvard Medical School, Boston, MA

Professional Societies:

- (Active) **Washington State Medical Association**
- (Active) **American Board of Radiology**
- (Active) **American College of Radiation Oncology**
- (Active) **American Society of Radiation Oncology**
- (Active) **Alpha Omega Alpha Honors Society**

State Medical Licenses:

- M.D. Oregon (Active)
- M.D., Washington (Active)